



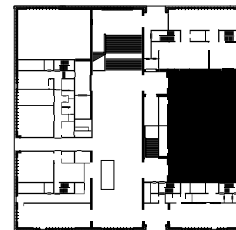
RECEPTION HALL

The elegant one – 100 to 600 people

KUNSTHAUS ZÜRICH

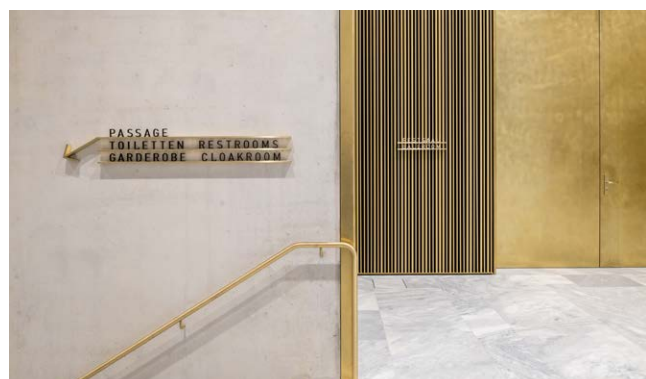
RECEPTION HALL

The elegant one – 100 to 600 people



In the new museum extension by David Chipperfield, your guests can immerse themselves in an elegant ambience. The large, multifunctional reception hall and stage can be used flexibly according to your needs – from a banquet, standing reception or conference to a concert setting, film screening, performance or party, including a combination of these options. The exclusive hall with state-of-the-art event technology allows for subdivision of space or open use of the total area of 465 m² by up to 600 guests.

In addition to elegance and modernity, the banqueting hall offers additional amenities for contemporary event operations: a multifunctional, well-equipped catering kitchen with its own access with its own access road; advantageous logistics for deliveries and drop-offs; a cloakroom for performers and acoustic optimisation in the ballroom according to the type of event.



SIZE

ca. 465 m² total area
100 – 600 persons

Hall: length 28.3 m, width 16.5 m,
height 5.10 m

Stage: width 10 m, depth 5.2 m
maximum capacity: 600 persons

EQUIPMENT AND TECHNOLOGY

Included in the rental price: seating and basic technology (basic lighting and sound system, lectern, screen).

At an additional charge: optional performance-quality sound and lighting technology as well as flexible stage design options (podium, orchestra, etc.)

ENLARGEMENTS

- Outdoor areas in the garden
- Apéro zones in the entrance hall
- Additional rooms for meetings and seminars

RENT PRICE

7500 CHF / day plus additional costs
(including set-up and cleaning)

FRAMEWORK PROGRAMME

The Kunsthaus offers you a wide range of options for inspiring and varied social programmes ranging from private museum tours to interactive workshops and tailor-made art experiences. We will promptly submit a proposal based on your preferences and needs.

CONTACT

events@kunsthaus.ch
+41 (0)44 253 84 73

Exemplary forms of use and furnishing

1.37m 1.86m 1.89m 1.87m 2.00m

Tafel ohne Stühle, 12 Personen, 100 Nahrungsmittel

01 12 03 13 14 15 16 17 18 19 20 21 22 23 24

[illegible]

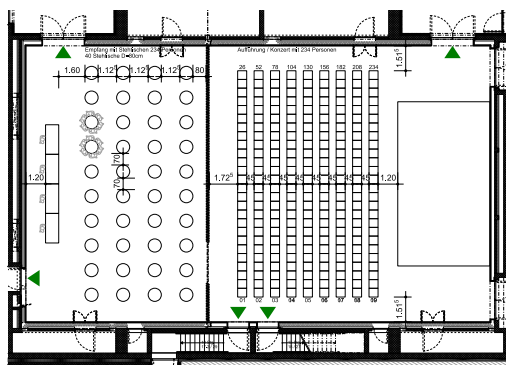
The floor plan shows a rectangular hall with a stage area at the top. The stage area is labeled 'Vorlag / Auftritte - 120 Personen' and has a width of 1.20m. The main seating area is divided into two sections by a central aisle. The left section is labeled 'Banken - 120 Personen' and 'Theater - 20 Personen (alt Theater 30 x 10m)'. The right section is labeled 'Vorlag / Auftritte - 120 Personen'. The hall has a total width of 7.00m and a total length of 14.50m. The stage area has a width of 1.20m and a length of 4.43m. The seating area has a width of 5.30m and a length of 11.20m. The stage area is marked with green triangles indicating the entrance for the 'Vorlag / Auftritte' group. The seating area is marked with green triangles indicating the entrance for the 'Banken' and 'Theater' groups. The hall is surrounded by a thick black border representing the building structure. There are several doors and windows indicated by dashed lines and symbols. A staircase is located at the bottom center of the hall.

Banquet with stage (up to 200 persons)
accommodates 25 round tables (150 cm) of 8 guests

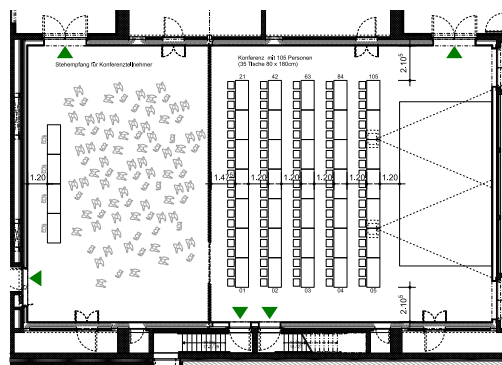
RECEPTION HALL

Exemplary forms of use and furnishing

2. STANDING RECEPTION PLUS PERFORMANCE OR CONFERENCE

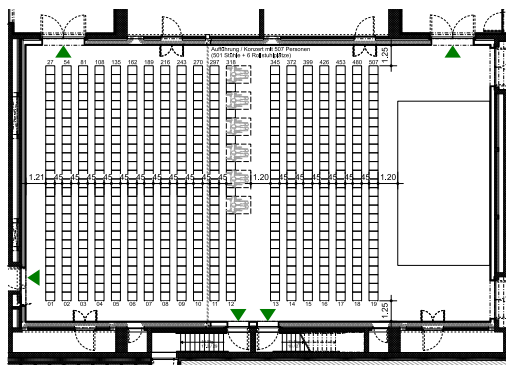


Standing reception plus performance (up to 230 persons)
 Section 1: 40 high tables (80 cm)
 Section 2: 230 seats with theatre seating



Standing reception plus conference (up to 100 persons)
 Section 1: Standing reception with high tables and buffet tables
 Section 2: 35 tables (80 x 180 cm) with 100 seats plus stage

3. PERFORMANCE



Performance/concert (up to 500 persons)
 Seated: stage and 500 seats with theatre seating

Performance/concert (up to 600 persons)
 Standing: stage (no seating)

4. PARTY

Room can be used flexibly (DJ, cocktails, etc.) with optional subdivision of space to accommodate 100 or more persons.